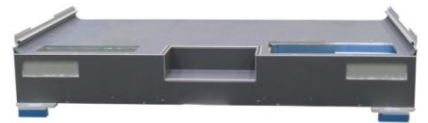


Preassemblies

- Completion of drop-in parts (inserts, reinforcements, extruded profiles, priming, grinding, coating)
- Final assembly of complete units
- Design and manufacturing of composites parts and selection of suppliers for add-on parts
- Product qualification



Defense technology, mobile container



Train floor completely finished for assembly into the train



Production and assembly of a cabin for a fire engine



Detail of an assembly for aircraft interiors (complete base structure done by EC)



Detail of an assembly for aircraft interiors (complete base structure done by EC)



Detail of an assembly for aircraft interiors (complete base structure done by EC)