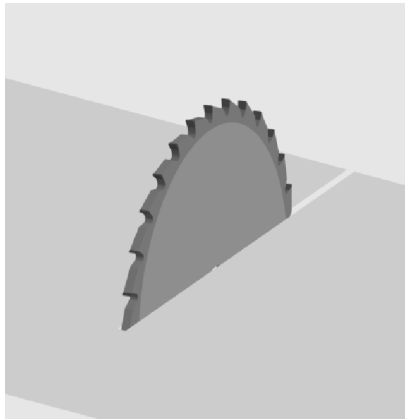

Cutting of EC-Panels with honeycomb core

Cutting



The cutting of the panels can be done by traditional cutting tools, e.g. a table circular saw, a hand circular saw, a compass saw, a band saw. Hard metal saw blades with a high number of saw blade teeth should be used.

In General:

The best cutting quality will be reached by a high cutting speed and a low forward feed.

The selection of the processing tools depends on the skin material. In case of metal skins, the surface temperature during any processing must not exceed 100°C.

When cutting you have to pay attention that there will be no peeling of the lower skin which would render the panel unusable. We recommend a supporting structure of wood.

Disclaimer

We believe the information given in this document to be accurate, but because of the plentitude of products and possible applications for our products we have to exclude all warranty or liability for the actual or intended application. The user must assure by own trials that our products are suited for the purpose required. We reserve the right for technical changes without further notice. All sales are made subject to our general terms of sale and delivery.